



KIM LOONG
RESOURCES BERHAD

錦隆資源有限公司

197501000991(22703-K)

Corporate Profile

29 March 2022

Introduction to Kim Loong Resources Berhad (“KLR”) Group



KIM LOONG
RESOURCES BERHAD

- KLR's holding company, Sharikat Kim Loong Sendirian Berhad, had its beginning back in 1967 with a 1,000 acre rubber plantation in Ulu Tiram, Johor
- KLR is listed on the Main Market of Bursa Malaysia Securities Berhad since year 2000 and currently with a RM1.896 billion market capitalisation
- KLR is primarily involved in oil palm cultivation and related businesses which include the following:
 - About 17,000 Ha of oil palm plantations in Sabah, Sarawak and Johor
 - 3 palm oil mills located in Johor and Sabah with a total processing capacity of 250MT of FFB per hour

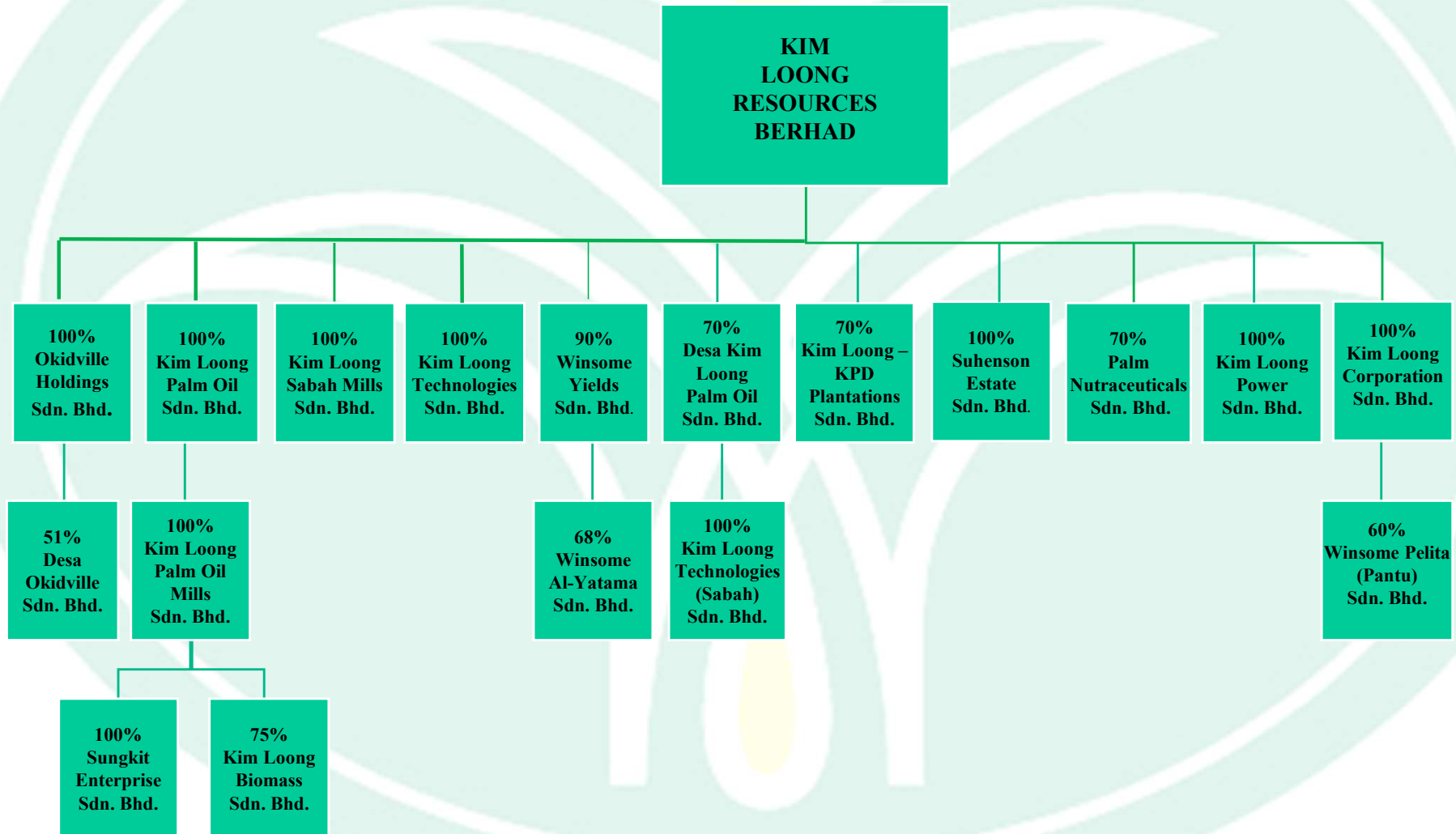




KIM LOONG
RESOURCES BERHAD

Group Structure (Active Companies Only)

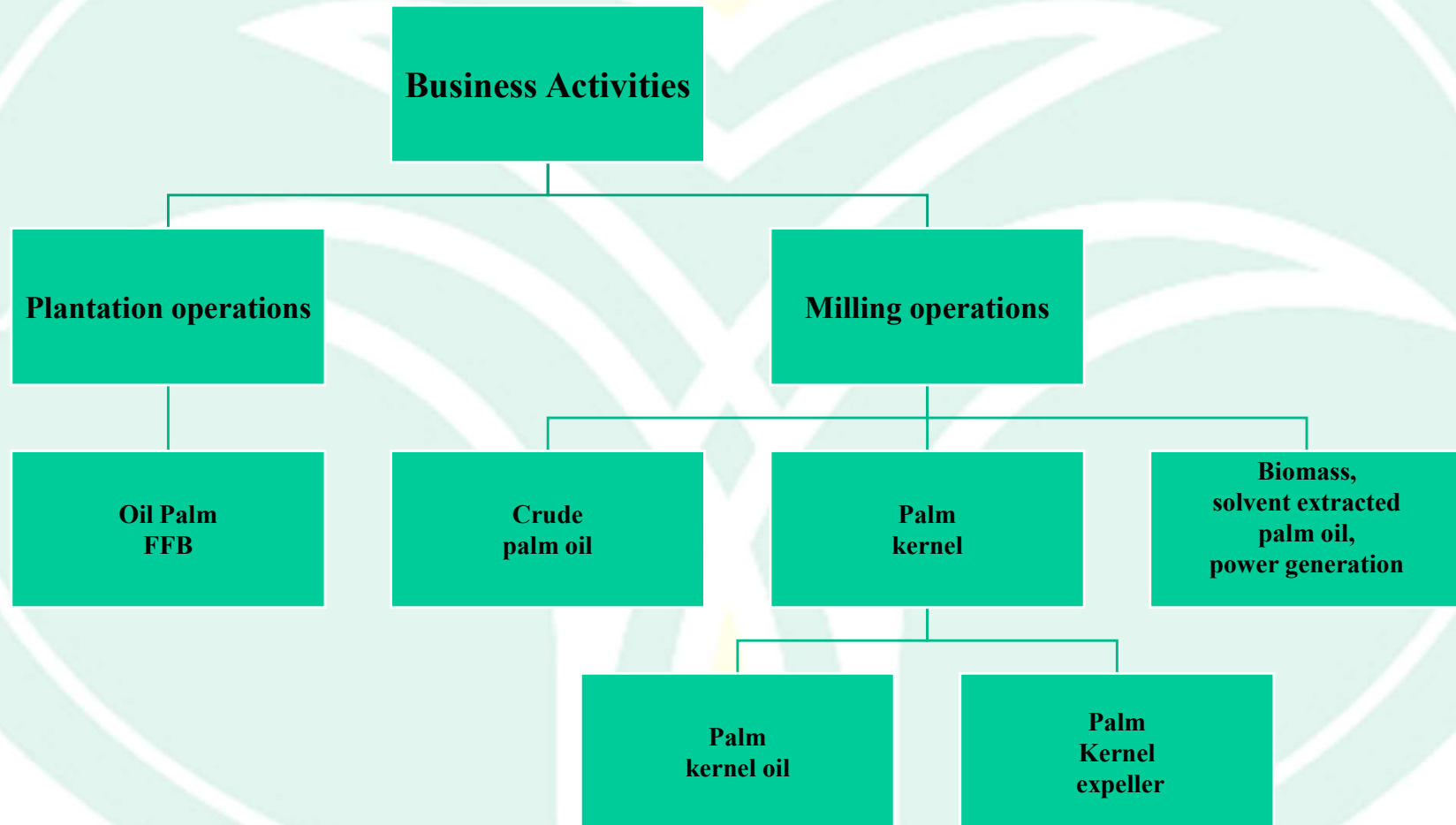
AS AT 31 JANUARY 2022



Principal activities



KIM LOONG
RESOURCES BERHAD



Financial Highlights

FINANCIAL PERFORMANCE



KIM LOONG
RESOURCES BERHAD

	Financial year	
	2021	2022 *
Revenue (RM'000)	971,677	1,701,662
EBITDA (RM'000)	180,511	248,481
Profit before tax (RM'000)	144,551	210,663
Weighted Average No. of Share ('000)	933,607	947,227
Shareholders' equity (RM'000)	749,274	810,391
Basic earnings per share (Sen)	10.16	14.48
PE Ratio (times)	13.4	11.7
Return on Capital Employed (Pre-tax) [N1]	16.2%	21.4%
Return on Total Equity (Pre-tax)	17.1%	22.9%
Return on Total Assets (Pre-tax)	13.3%	16.6%
Gearing	0.06	0.07

N1 : Capital Employed includes Total Equity and Bank Borrowings.

* Based on unaudited 12-months results ended 31 January 2022.

Financial Highlights (continued)

ANALYSIS BY SEGMENTS



KIM LOONG
RESOURCES BERHAD

	Financial Year	
	2021 RM'000	2022 * RM'000
REVENUE		
Plantation	143,143	213,271
Palm Oil Milling	945,308	1,663,794
Less : Inter-segment eliminations	(116,774)	(175,403)
TOTAL GROUP	971,677	1,701,662
RESULTS		
Plantation	71,147	120,326
Palm Oil Milling	73,766	96,452
	144,913	216,778
Inter-segment adjustments and eliminations	561	(1,537)
Unallocated cost **	(8,396)	(8,088)
Finance income	8,482	5,449
Finance cost	(1,009)	(1,939)
Profit before tax	144,551	210,663

* Based on unaudited 12-months results ended 31 January 2022.

** Unallocated cost mainly consists of salaries and other office administration cost net of management fee and commission income receivable.

Financial Highlights (continued)

DIVIDEND PAYMENT RECORD



KIM LOONG
RESOURCES BERHAD

	Financial Year	
	2021	2022 *
Net profit attributable to equity holders of the Company (RM'000)	94,891	137,168
Net dividend declared (RM'000)	93,970	135,102
Gross Dividend Per Share (sen)	10.0	14.0
Gross Dividend Yield (%)	7.4%	8.2%
Dividend Pay- out (%)	99.0%	98.5%
Market Price at period end (RM)	1.36	1.70
NTA per share at period end (RM)	0.80	0.84

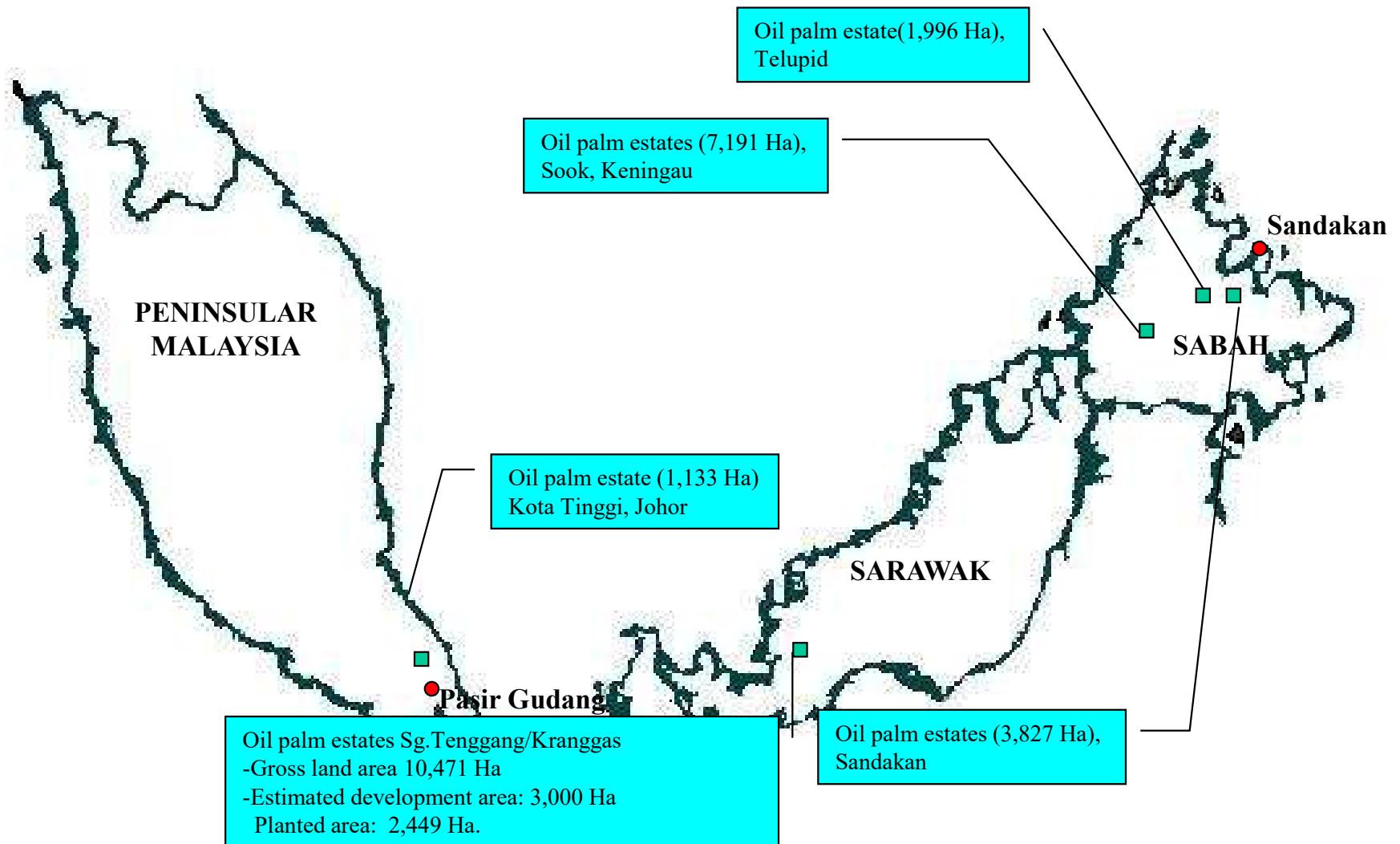
* Based on unaudited 12-months results ended 31 January 2022.

Plantation Operations :

LOCATION OF OPERATIONS



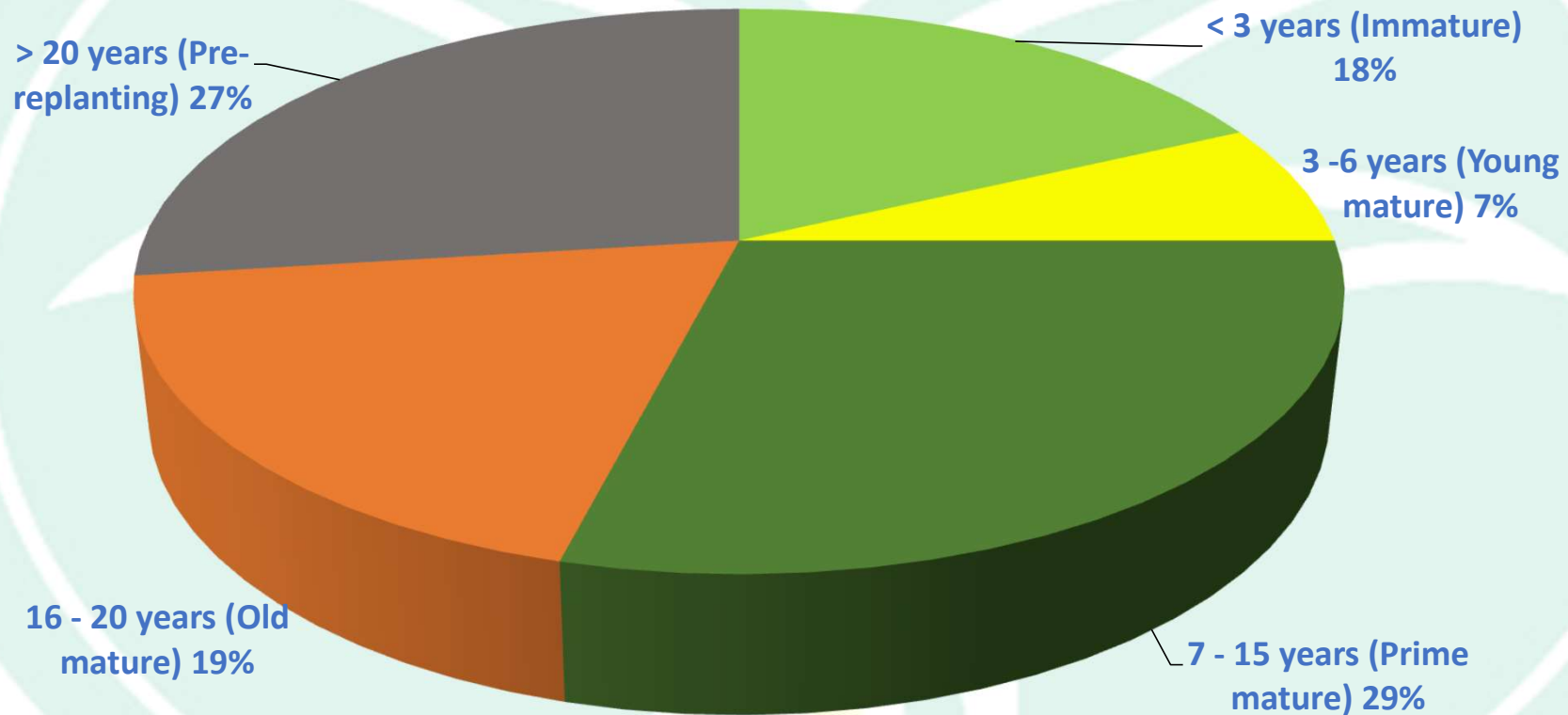
KIM LOONG
RESOURCES BERHAD





KIM LOONG
RESOURCES BERHAD

AGE PROFILE OF PALMS (AS AT 31 JANUARY 2022)



Total planted area: 15,939 hectares



PRODUCTION

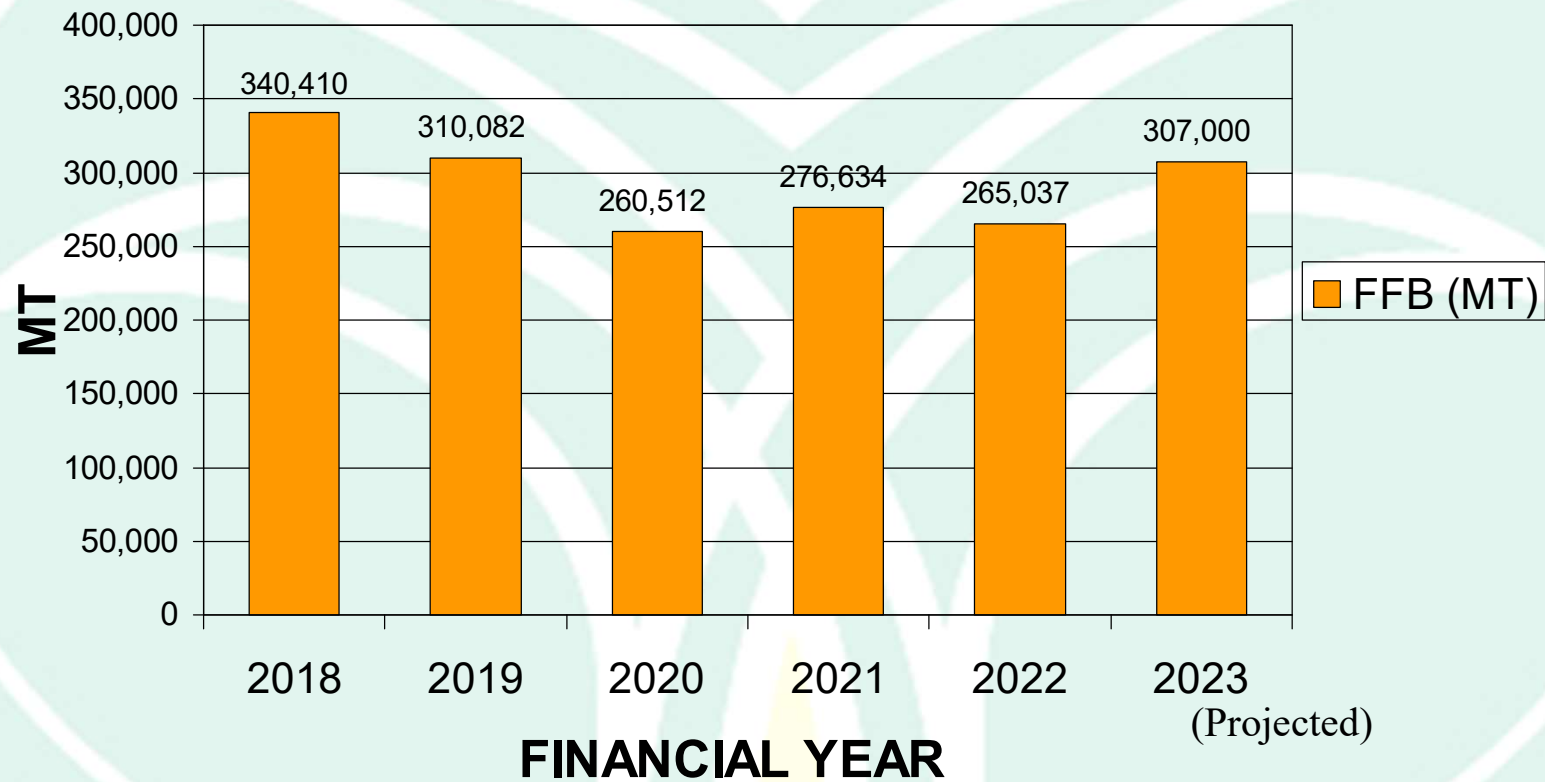
FINANCIAL YEAR

	2021 (MT)	2022 (MT)	% change
FFB	276,634	265,037	-4
CPO	280,493	311,752	11
PK	69,073	75,373	9





FFB PRODUCTION & PROJECTION

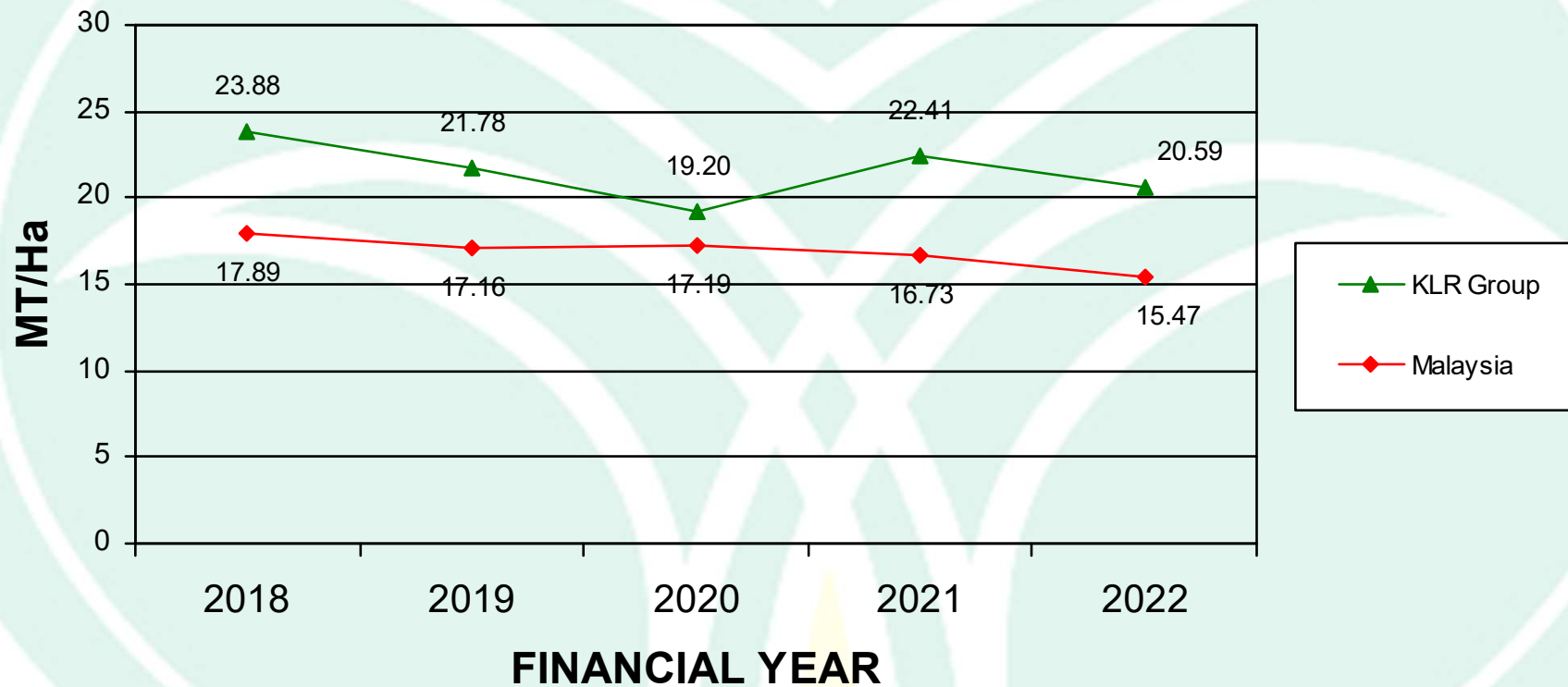


The projected FFB production for FY2023 is 307,000MT.

Note : Projection of production is based on existing land bank.



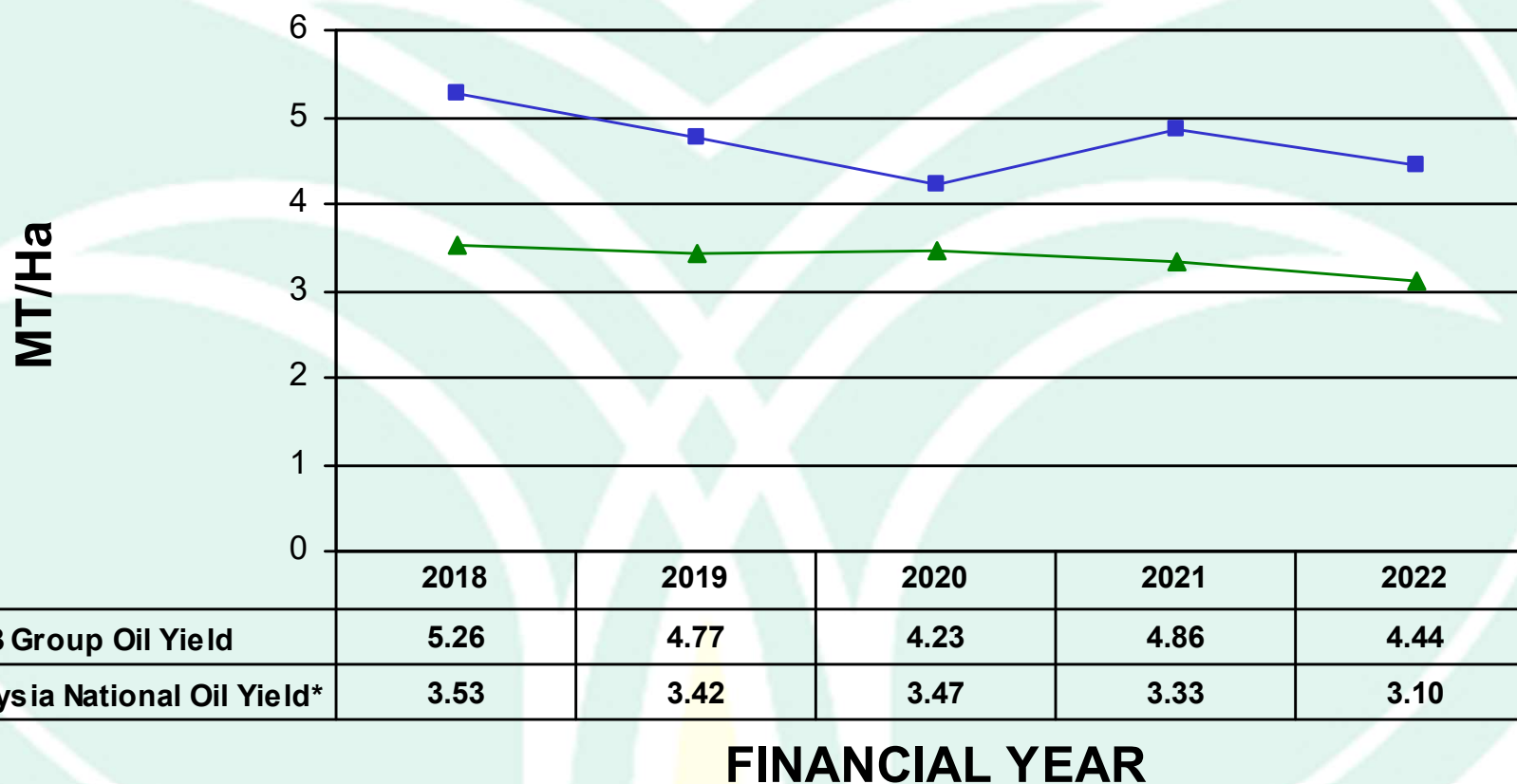
FFB YIELD PER HECTARE



1. Decline in 2020 was partly due to lower yield from young mature palms and deferment of peak crop cycle into following financial year.



OIL YIELD PER HECTARE



Note :

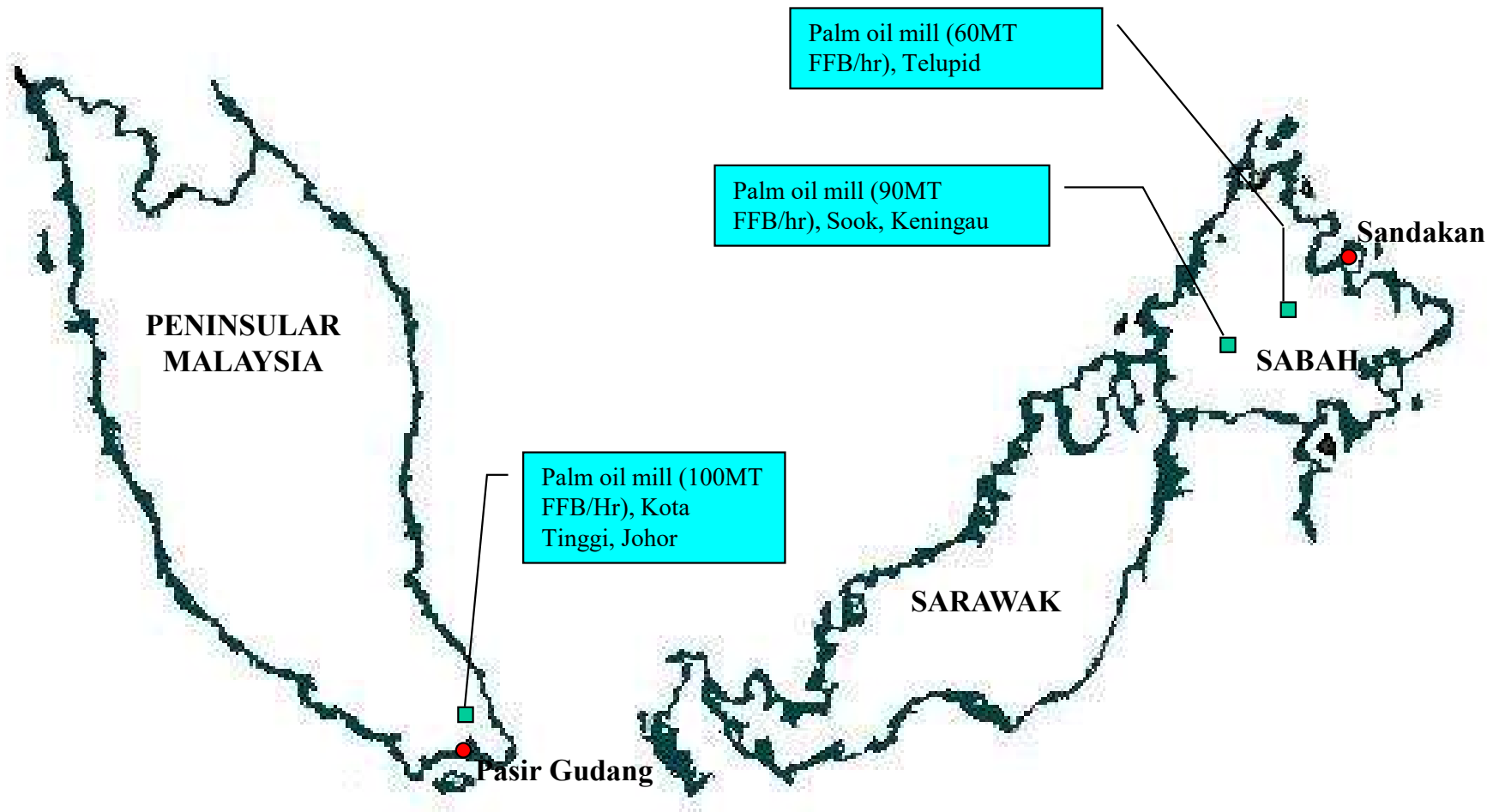
The statistics for Malaysia National CPO extraction rates are extracted from MPOB web-site based on calendar year 2017 to 2021 whilst the figures from KLR group are based on its financial year (Feb – Jan).

Palm Oil Milling:

MILLING LOCATION

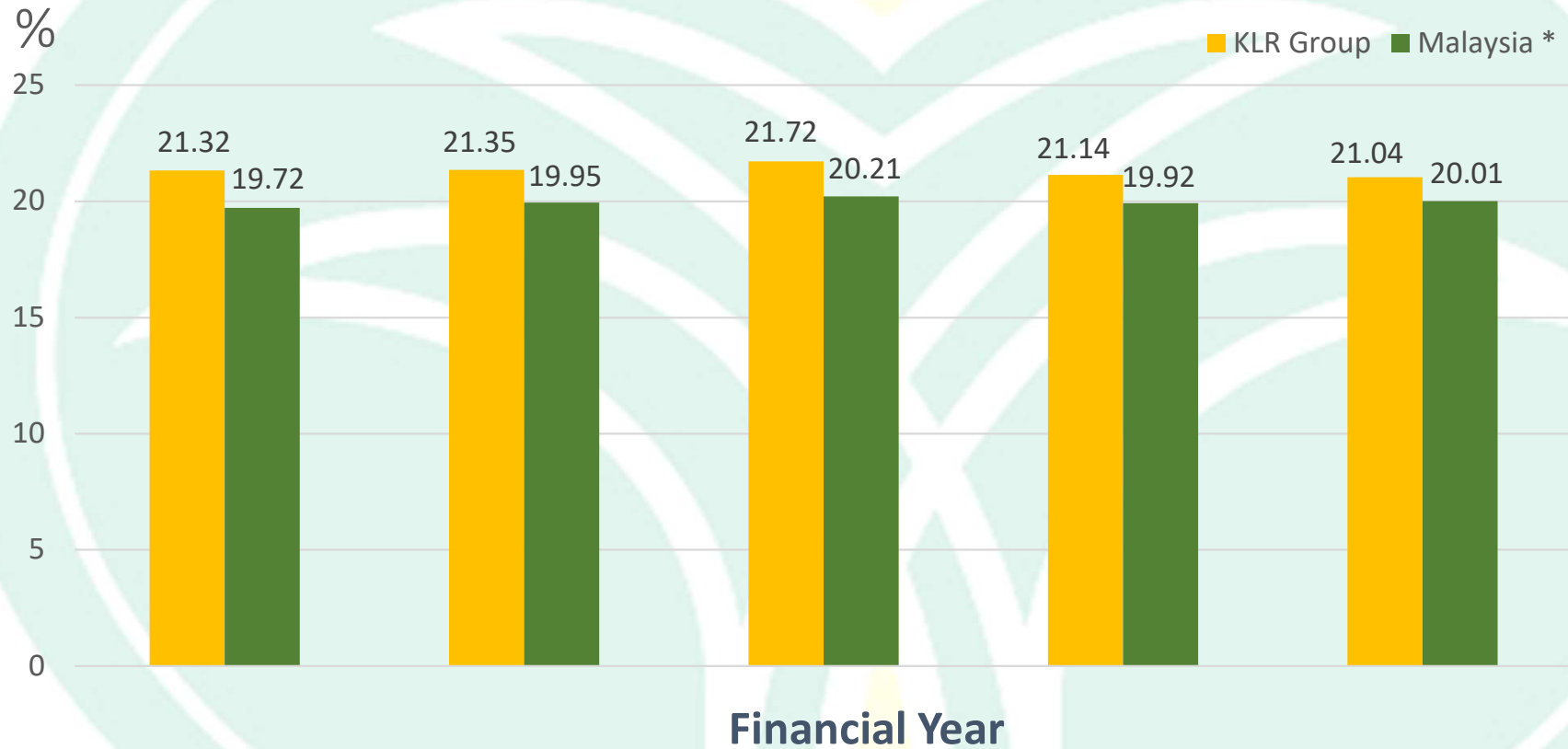


KIM LOONG
RESOURCES BERHAD





CPO OER COMPARISON



Note :

*The statistics for Malaysia National CPO extraction rates are extracted from MPOB web-site based on calendar year 2017 - 2021 whilst the figures from KLR Group are based on its financial year (Feb – Jan).



Environmental, Sustainability and Governance (ESG)

Environmental

- Zero burning in land clearing
- Soil enrichment and conservation program
- Riparian reserves
- Reduction of greenhouse gas emission
- Waste and effluent management

Sustainability

- Human and workers rights
- Health and safety
- Freedom of association and collective bargaining
- Improving the quality of life
- Diversity and inclusion
- Contribution to society

Governance

- Anti-bribery and anti-corruption policy
- Transparency
- Shareholder rights



Green Practices

Mill

- We have implemented three methane capture facilities for the renewable power generation projects at our three mills which reduce greenhouse gas emissions as well as reducing the reliance on diesel power generator during start-up or low crop period.
* latest progress refer Near Term Prospect under Mill (power projects)
- Our effluent treatment systems allow capturing of greenhouse gas to minimise greenhouse gas emission to the atmosphere and are adequately designed to meet the discharge parameter mandated.
- The amount of GHG (Methane) captured or destroyed in cubic meters based on readings of our three mills in the FY2022 was 29,791,000m³ (FY2021: 31,354,000 m³).

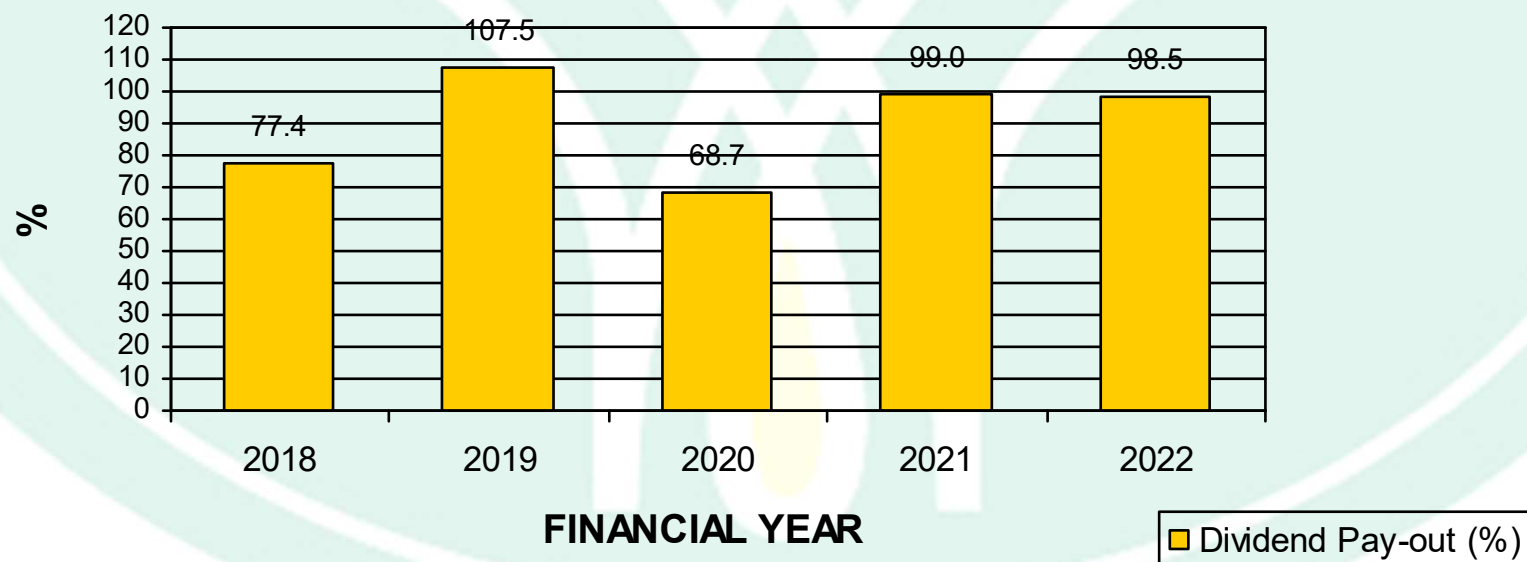
Plantation

- The Group adheres strictly to the policy of zero burning in both new planting and replanting of oil palm. Zero burning keeps the air smoke-free. The remnants debris, comprising bushes or small trees which are felled, are shredded and spread in the field to biodegrade, releasing nutrients slowly, add valuable organic matter to the soils, reducing the use of fertilisers during the immature period.
- Planting of leguminous cover crop in new planting and replanted areas. The fast-growing plants provide cover to protect the soil and build up nutrients in the topsoil as well as to suppress weed.
- Solid organic waste material generated from the milling operations such as decanter cake and empty fruit bunches (“EFB”) are applied in fields, especially at marginal soil areas. Schedule wastes are disposed off properly.

Dividend Policy

Target Dividend Payout Ratio

- » We do not have a formal dividend policy but we are committed to pay-out at least 30% of profit.
- » Our pay-out rate in the past 5 years are as follows:





KIM LOONG
RESOURCES BERHAD

BUSINESS OUTLOOK AND STRATEGIES

Recent Development



KIM LOONG
RESOURCES BERHAD

Plantation

- » On 9 February 2021, the Group took physical possession of 2,722 acres which is equivalent to 95% of total 2,862 acres of oil palm plantation lands from the vendors, namely (1) Greenfingers Sdn. Bhd.; (2) R & H Sdn. Bhd.; (3) Bakti Perusahaan Sdn. Bhd.; and (4) Sri Handal Sdn. Bhd. whilst pending the fulfilment of all Conditions Precedent by the vendors. On 20 May 2021, the Group decided to terminate the purchase of one remaining land measuring approximately 140 acres due to unfulfillment of Conditions Precedent.
- » After due consideration on documentation received in July 2021 on fulfilment of major Conditions Precedent, the management decided to recognise the acquisitions of 2,722 acres as the management is of the view that the risks and rewards are deemed to have been transferred to the Group.
- » The acquisition of the 2,722 acres was completed upon confirmation of fulfilment of the remaining Conditions Precedent on 14 January 2022.
- » These 2,722 acres have contributed 26,000 MT of FFB and substantial profits to the Group in FY2022.

Near Term Prospect



KIM LOONG
RESOURCES BERHAD

Plantation

- » The Group's FFB production for FY2023 is expected to be about 15% higher than FY2022.
- » The Group is expected to perform well for the FY2023 on the account of high CPO and PK prices.
- » In view of current strong CPO price, the Management has adjusted replanting programme with deferment on areas which continue to contribute good yield and planned to resume major replanting activity from year 2024 onwards.



Near Term Prospect (continued)



KIM LOONG
RESOURCES BERHAD

Mill

- » Despite stiff competition from surrounding mills, we expect the total mill processing quantity for FY2023 to be similar to FY2022.
- » Estimated sales revenue for excess palm kernel shells to third parties is about RM20 million from our three mills in FY2023.
- » Palm fiber oil solvent extraction plants (“PFOE”) in our Kota Tinggi and Keningau mills are running satisfactorily, contributing substantial revenue and profit for the Group.



Near Term Prospect (continued)

Mill

Power projects implementation in:

- » Mill at Kota Tinggi, Johor
 - 3 units of 500 kilowatts gas engine for internal use.
 - Successfully obtained approval for net export capacity of 1.8 megawatt per hour from Sustainable Energy Development Authority (“SEDA”) Malaysia in April 2015 and Renewable Energy Power Purchase Agreement (“REPPA”) has been signed with Tenaga Nasional Berhad (“TNB”).
 - Installation of 2 units of 1.2 megawatts gas engine for supplying electricity to TNB grid was completed and commenced operation in June 2019.
 - For 12 months up to January 2022 in FY 2022, revenue of RM5.2 million has been generated from supplying power to TNB grid. Annual revenue of about RM5 million is expected from FY2023 onwards.
- » Mill at Keningau, Sabah
 - 2 units of 500 kilowatts gas engine for internal use.
 - Successfully obtained approval for net export capacity of 2.0 megawatt per hour from SEDA Malaysia in December 2016 and REPPA has been signed with Sabah Electricity Sdn. Bhd. (“SESB”).
 - Installation of 2 units of 1.2 megawatts gas engine for supply to SESB grid has commenced in September 2019 and completed in February 2022. It is expected to commence operation to supply power to grid by end of second quarter of the FY2023 pending approval from relevant authority.

Near Term Prospect (continued)

Mill (continued)

Power projects implementation in: (continued)

- » Mill at Telupid, Sabah
 - 2 units of 500 kilowatts gas engine for internal use.
 - Successfully obtained approval for net export capacity of 1.5 megawatt per hour from SEDA Malaysia in September 2019 and REPPA has been signed with SESB.
 - Installation of 2 units of 0.9 megawatts biogas engines is in progress and is expected to commence operation to supply power to grid by end of second quarter of the FY2023.



KLR Group's Future Plan



KIM LOONG
RESOURCES BERHAD

KLR's future plans are as follows:

- ❖ To source for additional plantation land in Sabah and Sarawak. However, compliance with MSPO restrictions and ESG policies are major constraints.
- ❖ To source for suitable land and apply for license to set up a palm oil mill in Sarawak.
- ❖ To continue replanting of older palms to ensure continued growth in future FFB production.
- ❖ To improve mechanisation of plantations systems.



Corporate Fact Sheet



Corporate Address Lot 18.01, 18th Floor, Public Bank Tower
19, Jalan Wong Ah Fook,
80000 Johor Bahru, Johor, Malaysia

Directors

Gooi Seong Lim	<i>Executive Chairman</i>
Gooi Seong Heen	<i>Managing Director</i>
Gooi Seong Chneh	<i>Executive Director</i>
Gooi Seong Gum	<i>Executive Director</i>
Gan Kim Guan	<i>Senior Independent Director</i>
Chan Weng Hoong	<i>Independent Director</i>
Cheang Kwan Chow	<i>Independent Director</i>
Gooi Khai Chien	<i>Alternate Director to Mr. Gooi Seong Lim</i>
Gooi Chuen Kang	<i>Alternate Director to Mr. Gooi Seong Heen</i>

Corporate Fact Sheet (continued)

Stock Exchange Listing	Main Market of Bursa Malaysia Securities Berhad	
Listed on	27 November 2000	
Issued shares	967.26 million shares	
Market Cap	RM1.896 billion (based on share price of RM1.96 on 29 March 2022)	
Major Shareholders (as at 31 Jan 2022)	Sharikat Kim Loong Sendirian Berhad	64.68%
	Teo Chuan Keng Sdn Bhd	2.21%
	Krishnan Chellam	1.57%
	Koperasi Polis DiRaja Malaysia Berhad	0.78%
	UOB Kay Hian Nominee (Tempatan) Sdn. Bhd. - Exempt an for UOB Kay Hian Pte Ltd (A/C Clients)	0.64%
Financial year end	31 January	



KIM LOONG
RESOURCES BERHAD



KIM LOONG
RESOURCES BERHAD

錦隆資源有限公司

197501000991 (22703-K)

THANK YOU

Contact person : Mr Gooi Seong Heen (Managing Director)
Tel : 607-2248316
Email : heen@kimloong.com.my